

RGBlink®

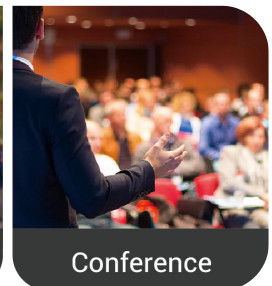
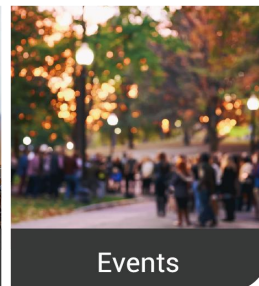
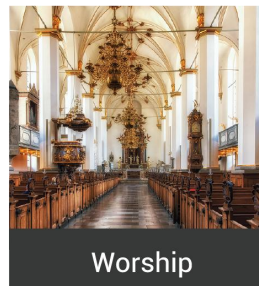
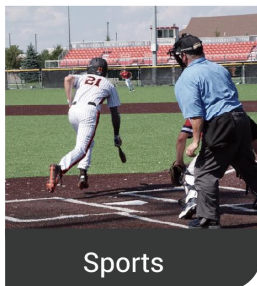


mini

mini Streaming Switcher

In 2020, RGBlink launched the first-generation mini live streaming switcher, quickly establishing itself in the lightweight market with its compact design. After two years of technological updates, the second-generation mini live streaming switcher has now been released with enhanced performance and better market cost alignment. The new mini features an adaptive cooling system and a more lightweight yet durable all-black enclosure. It supports multi-screen video switching, audio mixing, and YUY2 high-quality streaming for live streaming and remote video conferences, while maintaining its straightforward and user-friendly operation. In the rental industry, the mini offers more precise functionality. It supports dual-screen display, allowing users to freely adjust the size and position of the main and sub screens, and provides independent mixing of 4-channel digital audio and 2-channel analog audio.

The mini features 4 HDMI high-definition inputs and 1 HDMI output, supporting input from up to 4 cameras or computers and enabling comprehensive monitoring via its HDMI output. The built-in 2.1-inch IPS full-color screen eliminates the need for external displays, offering a What-You-See-Is-What-You-Get operation. For power supply, the mini uses a standard USB-C power interface that supports PD (Power Delivery) protocol, allowing for faster adaptation to various power needs and broader usage scenarios.

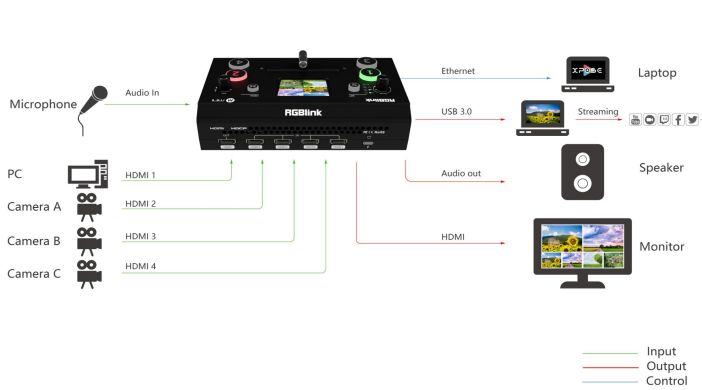


Key Features

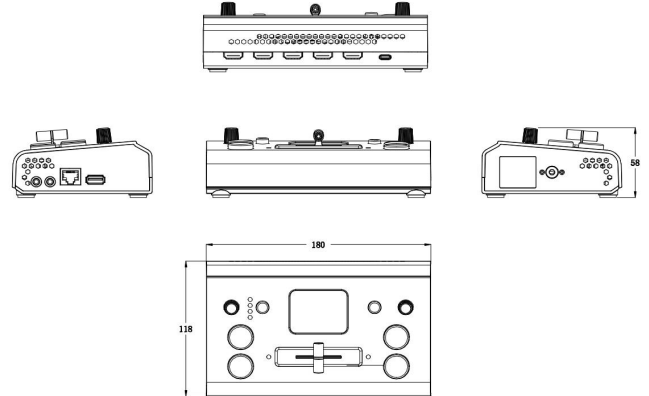
- 4 HDMI inputs, 1 HDMI output
- HDMI output can be set to 6-window Preview, Program or Inputs 1~4
- 2.1-in TFT full color screen built in for signal monitoring and menu operation
- Support MIC and LINE audio input, multi-channel mix audio
- Image scaling & cropping
- Support PIP, PBP

- Support Fast and T-Bar switch mode
- 6 transition effects
- LOGO overlay
- Support PC and APP control
- Air cooling design to ensure 24/7 stable operation
- Integrated design, easy to carry

Application



Dimension



Specification

Interface	Input	HDMI 1.3	4×HDMI-A	
	Output	HDMI 1.3	2×HDMI-A	
		USB 3.0	1×USB-A	
	Audio	In	1×3.5mm audio jack	
		Out	1×3.5mm audio jack	
	Communication	LAN	1×RJ45	
Power	Power Supply	1×USB-C		
Performance	Input Resolution	HDMI	720p@50/60 1080i@50 1080p@23.98/24.97/50/59.94/60	
		SMPTE	1024x768@60 1280x720@60 1280x768@60 1280x1024@60 1360x768@60 1366x768@60 1440x900@60 1600x1200@60 1680x1050@60 1920x1080@60	
		VESA		
	Output Resolution	HDMI	720p@50/60 1080p@24/25/30/50/60	
		SMPTE	1024x768@60 1280x720@50/60 1280x768@60 1280x1024@60 1360x768@60 1920x1080@24/25/30/50/60	
		VESA	1024x768@60 1280x1024@60 1360x768@60 1920x1080@30/50/60	
		USB H.265	1024x768@60 1280x1024@60 1360x768@60 1920x1080@30/50/60	
	Color Space	YPbPr		
	Grayscale Processing	10bit		
	Video Sampling	4:2:2 YUV		
Latency	<4 frames			
Support Standards	HDMI	1.3		
	H.265	ITU-T H.265/ISO/IEC 23008-2		
	USB	3.0		
	Ethernet	10/100/1000BaseT		
Power	Input Voltage	PD 12V/1.5A		
	Max Power	18W		
Working Environment	Temperature	0°C~60°C		
	Humidity	10%~85%		
Physical	Weight	Net	0.5kg	
		Packaged	1.3kg	
	Dimension	Net	180mm × 118mm × 58mm	
		Packaged	255mm × 145mm × 85mm	

Order Code

Product Code	Item
230-0001-03-0	mini

Contact us

Tel: +86-592-5771197

Fax: +86-592-5788216

E-mail: sales@rgbink.com

Headquarter: Room 601A, No. 37-3 Banshang community, Building 3, Xinke Plaza, Torch Hi-Tech Industrial Development Zone, Xiamen, China

RGBlink
www.rgbink.com

