



RGBlink®

# miniEDGE

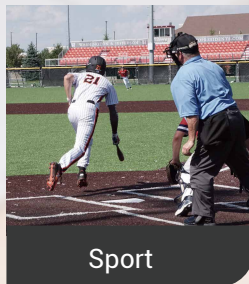
5 channel All-in-One Switcher



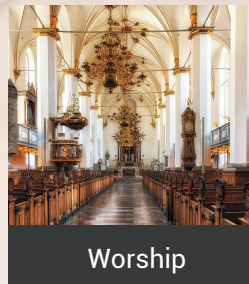
mini-edge is a controllable live broadcast recording and directing station with 5 video inputs, 8 audio inputs and multiple output interfaces, supporting multi-layer and mixing control. It is not only suitable for multi-platform live broadcasts and remote audio and video conferencing, but can also be used for various live events such as stages, education, press conferences, and sports games, while providing high-quality functions. while having excellent cost performance.



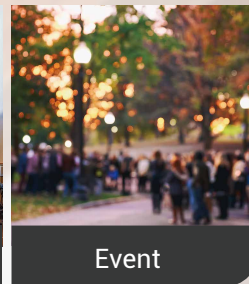
Education



Sport



Worship



Event



Conference



# Full-Featured Keyboard Controls at a Glance

The onboard 5.5-inch HD full-color screen monitors all input channels and output images in real time. Full-featured keyboard, fast control of any function.

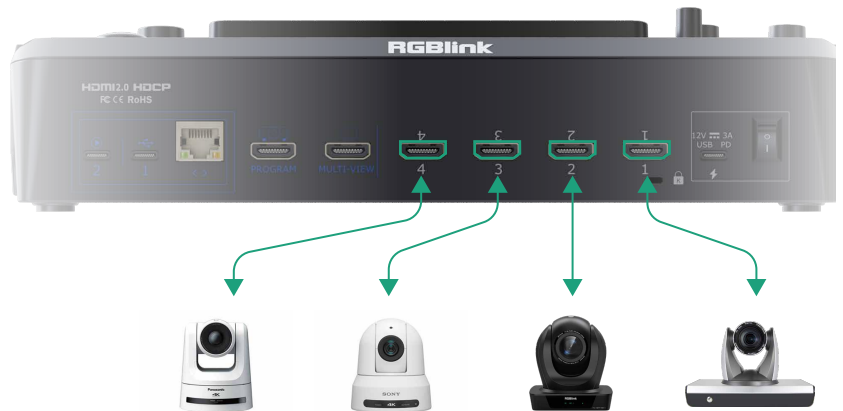
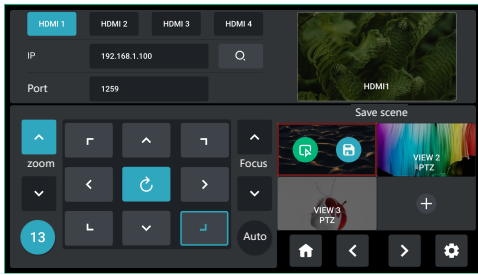


Configurable HDMI Output for live presentations



HDMI PVW port – configure for multi-view or AUX each input

# Take Full Control



## Integrated PTZ Camera Control

Forget about having multiple separate control panels for video and camera control. mini-edge brings it altogether, supporting industry standard VISCA protocol for PTZ control directly from the mixer. Control up to four separate cameras with pan, tilt, zoom and focus.



## Precise Fingertip Control

Integrated joystick provides tactile control for each PTZ camera. Used together toggle, pan, tilt, zoom and focus from the front panel. Joystick and toggle are additionally dynamically assigned to settings including scale, position and crop for enhanced useability.

# Pro Color Rendering and Layers

## One-Click Chroma Key

Enable presenters to be in virtual studios and environments with Chroma Key.

Select from standard key colours and enable Chroma Key directly on mini-edge without the need for an app. Refine colour selection and tolerances from the touch screen to optimise.



# Pro Level Audio

## Capture Every Sound

With two separate insert audio ports, mini-edge has got external balanced mic and line level audio covered. All two ports accept TRS 1/4in jacks, with MIC supporting direct XLR connection too. Plus there is 48V phantom power directly from mini-edge available too on MIC, negating the need for a separate DI, and instantly making studio mics native connections as they should be.



## Follow the Action & Always be In Sync

Set AFV for any HDMI embedded audio so the audio switches with the video source to PVW and PGM automatically.

Configure audio delay for MIC inputs or a camera input to keep audio in sync with the video.



## Monitor & Set Live

Pro mixer audio level controls are front and centre on mini-mx, enabling "in the mix" with full monitoring familiar and accessibility

⌘ Bluetooth audio input supports.

# Pro Level Video

## Sophisticated Multi-Layer Presentation

Assemble visuals with multiple layers of video and graphics. mini-edge offers 2 full video layers plus background image, two graphic overlays from the media pool as well.

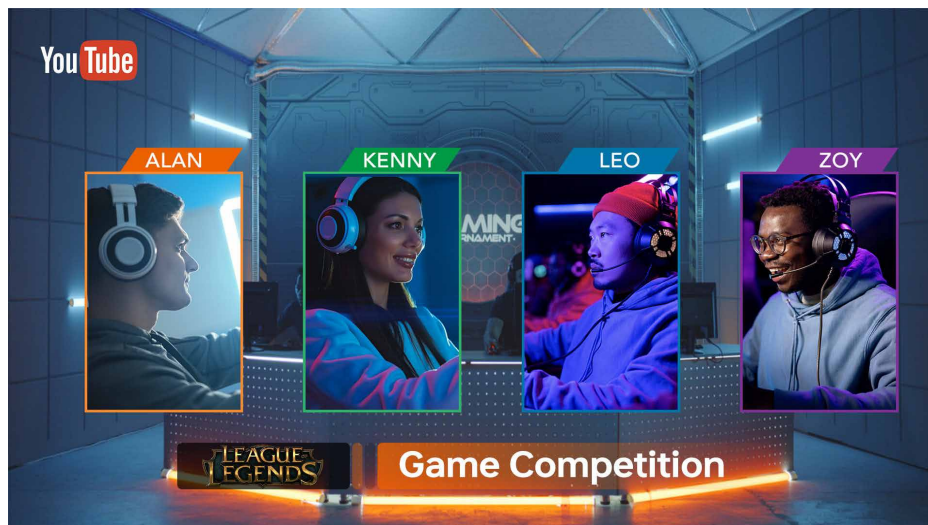


## Dynamically Scalable

Each of the two assignable video layers may be scaled, positioned and cropped with these placed over the background.

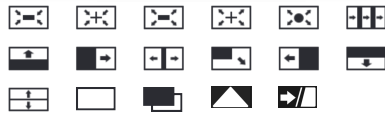
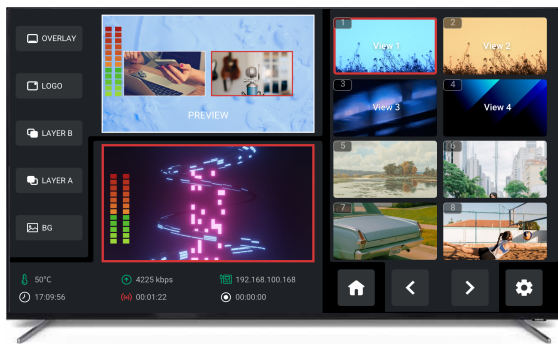
## Multiple Layer Sophistication

As well as dual video sources, add also media pool graphic overlays for lower-thirds and branding logos, switch seamlessly between graphic elements.



## Fluid Interactive Operation

Select any source or preset with control panel thumbnails and iconography that makes mini-edge a natural and intuitive way to present and stream.



## Transition Like a Pro

mini-edge includes multiple DVE transition effects from preset to program, adding sophistication and effect.

## Leverage the Power of Presets

Save and store up to 10 presets on mini-edge, allowing 1 press recall of all scene settings including PTZ focuses. Make use of smooth transitions.



## Go Remote

mini-edge web app companion apps for laptop and mobile allow remote use from the mini-edge and the video connections. Fully integrated with the RGBlink TAO cloud control streams remote too with TAO cloud.



---

## Connections

Video Inputs	HDMI 4K UVC	4 x HDMI-A (4 x 4K60) 1xUSB-C
Video Output	PGM PVW/AUX	1 x HDMI-A (1 x 2K60) 1 x HDMI-A (1 x 2K60)
UVC/Webcam Stream Output		1 x USB-C
Recording Output		1 x USB-C
Audio In	MIC LINE	1 x XLR/6.35mm TRS Jack 1 x 6.35mm TRS Jack
Audio Out	LINE H/PHONES	1 x 6.35mm (¼") TRS Jack 1 x 3.5mm mini-Jack
Communication		1 x RJ45
Power		1 x USB-C

---

## Control

		RGBlink mini OS
Applicable systems and browsers		Windows/Mac OS/iOS/ Android/Chrome/Edge
Firmware Updates		<b>U disk upgrade</b>

---

## Operational Environment

Temperature		0° to 45° C (32° - 115° F)
Humidity		10-85% RH

---

## Physical Specifications

Weight	Device Packaged	1.48kg (3.26lb) 2.80kg (6.17lb)
Dimensions	Device Packaged	280×223×64mm (11.0×8.8×2.5in) 332×238.5×109mm (13.1×9.4×4.3in)

---

## In the Box

mini-edge	1
PD power adapter	1
OTG cable	1
USB-C data cable	2
quick guide	1

---

## Order Codes

230-0006-01-0	mini-edge
---------------	-----------

---

## Performance

Input Convertors	Independently on each of 4 inputs
Input Resync	On all 4 HDMI 2.0 inputs
Input Resolutions	<b>SMPTE</b> 720p50, 720p60, 1080i50*, 1080p23.98, 1080p24.97, 1080p50, 1080p59.94, 1080p60 <b>VESA</b> 1024x768@60, 1280x720@60, 1280x768@60, 1280x800@60, 1280x1024@60, 1360x768@60, 1366x768@60, 1440x900@60, 1600x1200@60, 1680x1050@60, 1920x1080@60, 1920x1200@60, 3840x2160@60*, 4096x2160@60*
Output Resolutions	<b>SMPTE</b> 720p50, 720p60, 1080p23.98, 1080p24.97, 1080p50, 1080p59.94, 1080p60 <b>VESA</b> 1024x768@60, 1280x720@60, 1280x768@60, 1280x1024@60, 1360x768@60, 1920x1080@60

## Supported Standards

Video Streaming	HDMI 2.0, HDCP 2.2 ITU-T H.265, RTMP/RTMPS ISO/IEC 23008-2
USB	3.0
PTZ Control	VISCA OVER IP
Disk Formats	FAT32, exFAT
Recording	MP4
Ethernet	10/100/1000BaseT
Video Sampling	4:4:4 YUV
Grayscale Processing	10bit
Color Space	Rec 709 (RGB)
Colorspace Conversion	Realtime in Hardware
Latency	<4 frames
Audio In Delay	Up to 8 frames
Mic Plug In Power	+48VDC Phantom Power (MIC1 Switchable)
Line Audio Input	Balanced Stereo
Upstream/Chroma Keyers	1
Downstream Keyers	2
Output Layers	
Total	5
Video	2
Background	1 (JPG/PNG)
Still/LOGO	2 (JPG/PNG)
Hot Media Pool Sources	2
Direct/IP Streaming	
Format	RTMP/RTMPS
Connectivity	Ethernet, USB-C shared mobile connection
Streams	2 platforms simultaneously