

RGBlink[®]

M mini_{EFP}

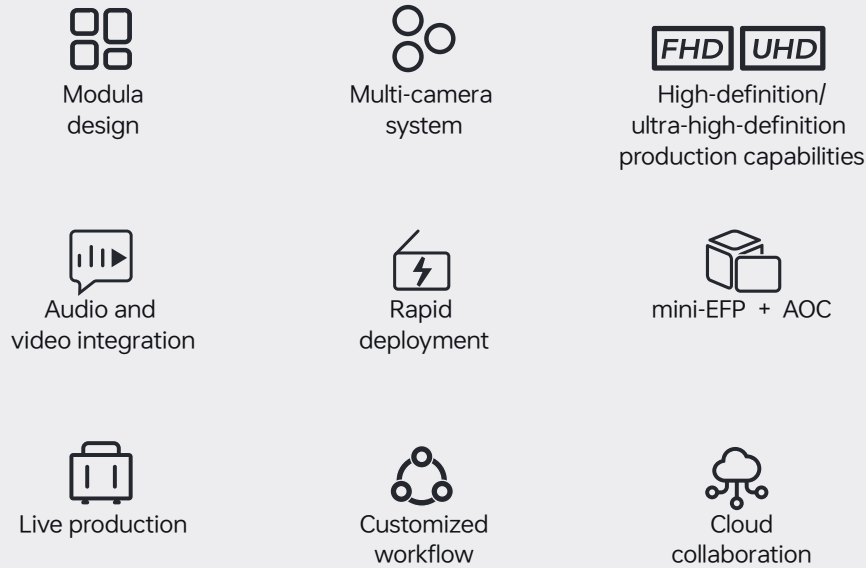


Robust Live production

RGBlink mini-EFP is born for robust live production, with its customized input and output capacity, and extends to the wide range signal compliance to meet on site signal bridge challenge.

mini-EFP is flexible in configuration from HDMI, UVC, SDI, ethernet to Fiber, signal transmission distance from a few meters to more than 1000 meters, take the content production from compact Studio to Arena just in a case. Always ready to deliver to live events and just power on and get the job done.

mini-EFP is capable to be widely used in various live production events including studio, music festivals, weddings, sports, conference, expos and so on. With its cloud connection to TAO, mini-EFP is not only produced content ready in the cloud to share, also ready to get collaboration with professional team remotely and the on site operators can focus on really operation but not technical detail configuration. mini-EFP brings excellent cost performance and ensures efficient, professional production into the reality.



Streaming Workflow

RTMP(S) streaming to TAO cloud and TAO restreams to 30+ content platforms requested, take the content distribution in a single connection.

Live broadcast

Whether it is mx or edge, it can be connected to a variety of external devices, such as cameras, notebooks and rich audio sources. It is rich and flexible. It can be easily completed for live demonstrations and streaming, realizing the advantages of multi-function all-in-one machines, and live broadcasting is more professional!

Control

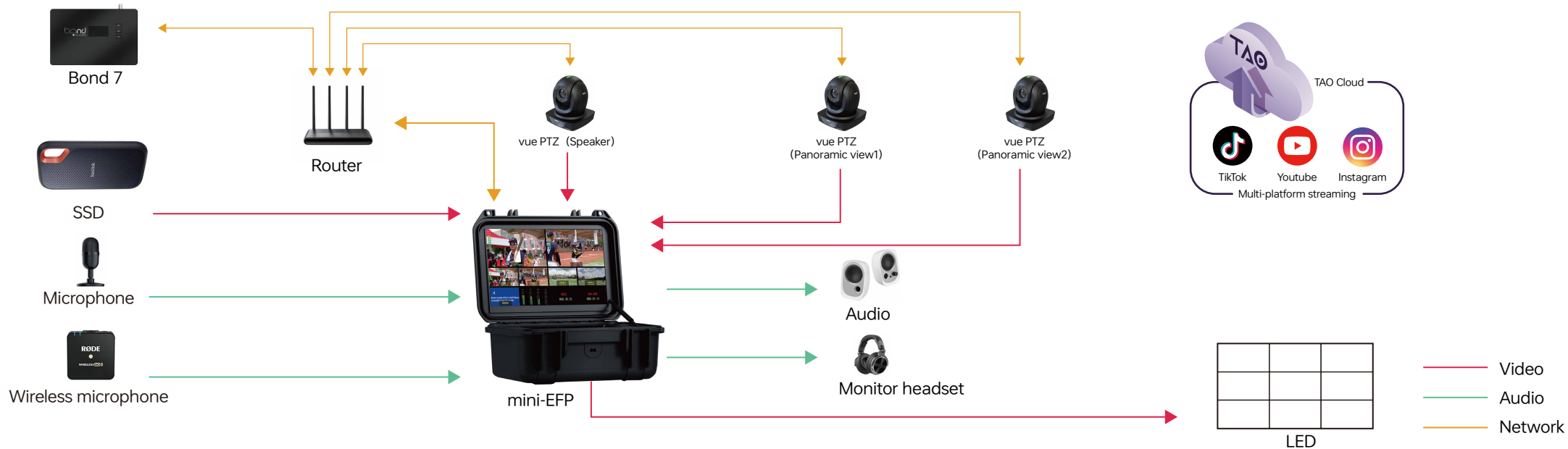
The integration includes the canvas in the picture, the pivot map, the reduction and cropping parameters, the signal source selection, the preset camera position of the PTZ camera, etc.,. Without the need for an additional control panel, 4 cameras can be controlled at the same time in this unit and the camera can be adjusted, scaled, and the viewing angle can be controlled at any angle through the standard VISCA protocol, and the camera position can be changed at will.

Pre-supervision

The mx or edge builds in with an integrated 5.5 inch LCD display, and the EFP has a built-in 13.3-inch IPS highlight monitoring screen, to monitor all audio and video input live and in the sun.

Switch effects

EFP supports not only 17 transition effects, but also brings multilayers preview to seamless switching with multilayers program, operators can do presets with different layers settings on preview, and recall each preset with seamless transition to program. This is sharply different to most streaming switcher and can fully take the events production into reality.



LED display Control system

Built-in LED sending card for air box
Realize the function of convenient carrying and immediate connection to control the LED display.



Applicable live broadcast switcher model

mini-edge



Personalized shortcut key design
One-click easy access to the required functions



mini-mx



Touch the menu icon to enter the function management interface in an instant, Enjoy a smooth and intelligent touch experience

Optional interface

Professional aviation plug interface, high quality and performance assurance
Flexible interface and format conversion, personalized application private customization



*The standard red interface is unique to the subito version.
If you need more optional interfaces, you can contact our sales staff.

Robust PE case

High-strength safety protection suitcase, shockproof, compression-resistant and durable
Easy to carry, you can broadcast wherever you want



Ready in the sun 13.3 inch widescreen display

Integrated 13.3-inch 350 nits HD IPS screen,
Integrated design of screen console, can be used out of the box



Comes with the box Active cooling fan

Integrate the fan in the box to improve the internal utilization rate
Long-lasting release of machine high performance



Waterproof and dustproof

The interface is equipped with a dust-proof plug to achieve all-round protection,
It is effectively waterproof and dustproof and prevents accidental kicks.



Air box Integrated design

The front of the air box integrates an audio interface and USB-B (LED control port),
Bring intuitive and convenient operation experience



USB-C Multi-function application interface

Can be customized to achieve live broadcast recording,
media video material,
Multimedia applications such as omnidirectional microphone
audio and video capture



Carry on with you Field Production just power on

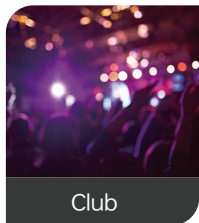


The portable design gives its live production significant advantages in the field of radio and television production and video production, especially suitable for tasks that require high efficiency and high quality to complete live program recording or live broadcast.

Application

mini-EFP live production, with its flexibility, high-quality output, real-time editing capabilities, and improves the audience experience, has demonstrated the unlimited power of video production, and has become the preferred solution for the production of many TV programs, webcasting, and large-scale events, whether it is live broadcast and live content creation, or remote live broadcast and collaboration, its powerful practicality covers all fields of medical, food, housing, education, and health care. Here you will always find the live broadcast method you want!

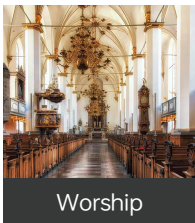
mini-EFP takes the events immersive experience to the new milestone, with on site engage and online interaction happened, and remote content production immediately.



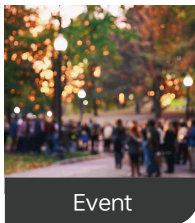
Club



Concert



Worship



Event



Conference



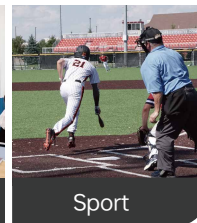
Training



Celebration



Education



Sport



Specification

Order Codes

230-0004-03-0	230-0004-04-0	230-0004-05-0	230-0004-06-0	230-0004-07-0	230-0004-08-0	230-0006-02-0	230-0006-03-0	230-0006-04-0	230-0006-05-0	230-0006-06-0	230-0006-07-0
---------------	---------------	---------------	---------------	---------------	---------------	---------------	---------------	---------------	---------------	---------------	---------------

Item

mini-mx-st	mini-mx-subito	mini-mx-1s	mini-mx-1s-subito	mini-mx-2s	mini-mx-2s-subito	mini-edge-st	mini-edge-subito	mini-edge-1s	mini-edge-1s-subito	mini-edge-2s	mini-edge-2s-subito
------------	----------------	------------	-------------------	------------	-------------------	--------------	------------------	--------------	---------------------	--------------	---------------------

Connectors

Input	230-0004-03-0	230-0004-04-0	230-0004-05-0	230-0004-06-0	230-0004-07-0	230-0004-08-0	230-0006-02-0	230-0006-03-0	230-0006-04-0	230-0006-05-0	230-0006-06-0	230-0006-07-0
HDMI 4K (HDMI-A)	4	4	3	3	2	2	4	4	3	3	2	2
SDI (BNC)	0	0	1	1	2	2	0	0	1	1	2	2
UVC (Webcam USB-C)	1	1	1	1	1	1	1	1	1	1	1	1
Output	230-0004-03-0	230-0004-04-0	230-0004-05-0	230-0004-06-0	230-0004-07-0	230-0004-08-0	230-0006-02-0	230-0006-03-0	230-0006-04-0	230-0006-05-0	230-0006-06-0	230-0006-07-0
HDMI 2K (HDMI-A)	1	1	1	1	1	1	1	1	1	1	1	1
SDI (BNC)	0	0	1	1	1	1	0	0	1	1	1	1
UVC (USB-C)	1	1	1	1	1	1	1	1	1	1	1	1
LAN (Stream RJ45)	1	1	1	1	1	1	1	1	1	1	1	1
USB (Record USB-C)	1	1	1	1	1	1	1	1	1	1	1	1
LAN (Subito RJ45)	0	4	0	4	0	4	0	4	0	4	0	4

Audio In	MIC	1×CANNON Jack (XLR) (mini-mx 2 x CANNON Jack)
	LINE	1 × 6.35mm TRS Jack
	Bluetooth	1 × Bluetooth Module
	HDMI	(Optional 2-4)HDMI-A
	SDI	(Optional 0-2)BNC

Audio Out	LINE	1 × 6.35mm 6.35mm TRS Jack 1 × 3.5mm mini-Jack
	HDMI	1 × HDMI-A
	UVC	1 × USB-C
	LAN	1 × RJ45
	USB(Control)	1 × USB-C

Control	USB (Subito)	1 × USB-B
---------	--------------	-----------

Performance

Input Resolution	HDMI	1280×720@50/59.94/60 1024×768@60 1280×768@60 1280×800@60 1280×1024@60 1360×768@60 1366×768@60 1440×900@60 1600×1200@60 1680×1050@60 1920×1200@60 1920×1080i@50/59.94/60 1920×1080p@23.98/24/25/29.97/30/50/59.94/60 3840×2160p@30/50/60 4096x2160@30/50/60
	SDI	1080P@23.98/24/25/29.97/30/50/59.94/60
Output Resolution	HDMI	1280×720@50/60 1024×768@60 1280×768@60 1280×1024@60 1360×768@60 1920×1080@23.98/24/25/29.97/30/50/59.94/60
	SDI	1080P@23.98/24/25/29.97/30/50/59.94/60
	USB(Webcam)	1920×1080@24/25/30/50/60
Video	Video Formats	HDMI 2.0 HDCP 2.2
	Grayscale Processing	10bit
	Video Sampling	4:4:4 YUV
	Video Latency	<4 frames
Audio	Line In Delay	up to 8 frames
	Audio Format	HDMI:Linear PCM, 24 bits/48 kHz, 2 ch USB: Linear PCM, 16 bits/48 kHz, 2 ch
Record/Storage	Record Formats	MP4
	Disk Formats	FAT32(≤32 GB) exFAT(64GB~2T)
Supported Standards	HDMI	2.0
	USB	3.0
	H.265	ITU-T H.265/ ISO/IEC 23008 -2

13.3" Display

Screen Size	13.3"
Panel Type	IPS
Display Color	16.7M, 72%NTSC/:16.7M, 100% <i>s</i> RGB
Resolution	1920×1080
Aspect Ratio	1000:1
Gamut	72%
Brightness	350 cd/m ²
Refresh Rate	60Hz
View Angle	85°/85°(L/R) 85°/85°(U/D)

Subito

RJ45(each port)	
Capacity	655,360 pixels
Horizontal Range	3840 pixels
Vertical Range	1920 pixels

Power

Input Voltage	PD 12V/5A
Maximum Power	60W

Physical

Outer Size	460mm × 360 mm × 200mm
Material	PE
Color	Black
Product Weight	7kg
Packaged Weight	9.23 kg
Product Dimension	460mm × 360mm × 200mm
Packaged Dimension	470mm × 370mm × 210mm